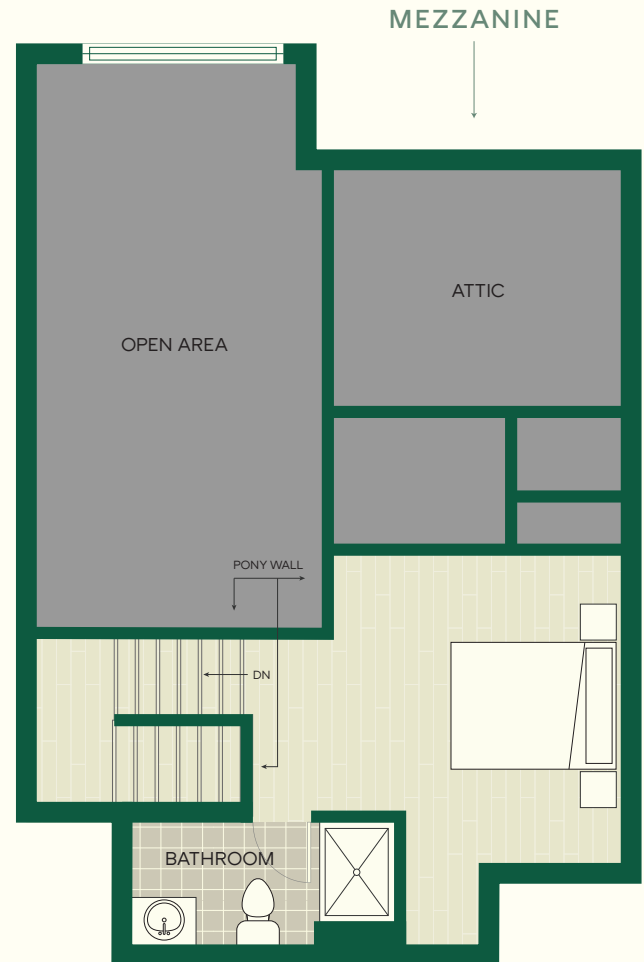
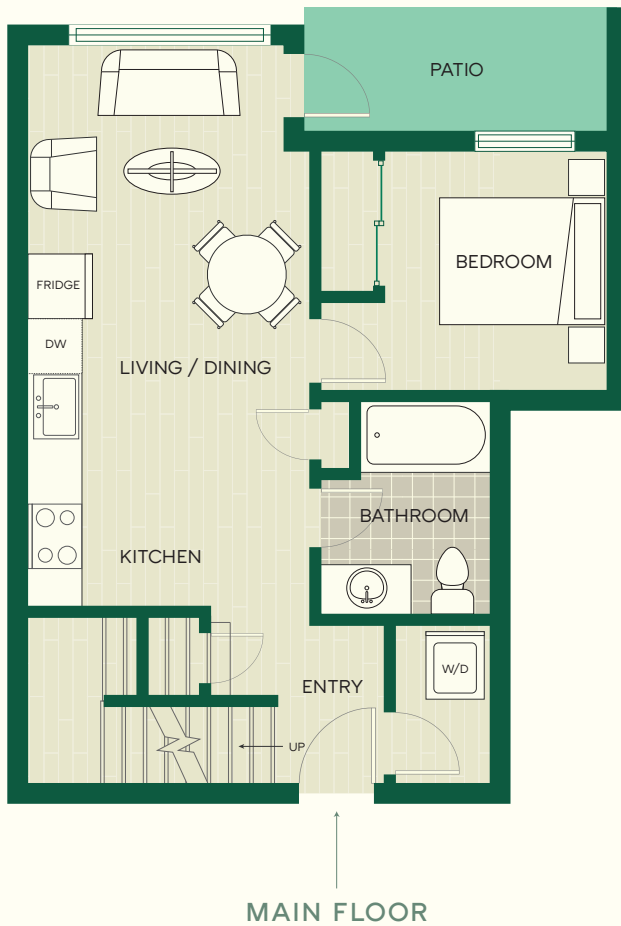


# The Kentwood

UNIT SPECIFICATIONS



## FLOOR 6

### TYPE C + MEZZANINE

1 bed | 2 bath

411 ft<sup>2</sup> + 215 ft<sup>2</sup> mezz.

*Note: Measurements are approximate and subject to change. Units may vary slightly and/or be mirrored depending on floor location.*

- Quality constructed and elegantly finished suites, offering a modern design all within walking distance of shopping and dining.
- Open concept living and dining areas connected into a private patio, perfect for indoor-outdoor living and entertaining.
- The kitchen is equipped with premium stainless-steel appliances and black accents.
- Convenient full-size, stacked washer and dryer units are included.
- Each unit features its own mini split for AC and heat.
- Vinyl plank flooring throughout each unit. Units with a loft feature carpeting through the stairs and upper level.
- Vaulted ceilings.